



International expertise
on life in old age

About us

We are an interdisciplinary network of researchers from various Swiss universities who generate the latest findings and perspectives on the topic of age(ing) in a practical and transparent manner.



AGE-INT is the largest national research project to address the challenges and opportunities of demographic change in a practical manner with a trans- and interdisciplinary project team in the three largest language regions of Switzerland. The objective

of the project is to identify knowledge and examples of good practices in selected priority areas, both nationally and internationally, and to make them visible and accessible for a broad public and decision makers.

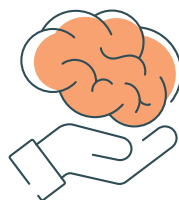
Our four competence clusters

Structures and opportunities for dealing constructively with demographic challenges



Technologies for people in old age

Expertise in innovative and assistive technologies for people in old age



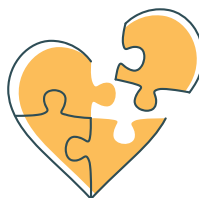
Dementia – prevention and care

Dementia care research, virtual educational practices and technology development



Employment at retirement age

Motives, opportunities and obstacles of employment beyond the standard retirement age



Social inclusion

Risk of isolation and social exclusion in old age

Contact

Do you have any questions or comments?
We will gladly assist you.

Technologies for people in old age

Prof. Dr. Sabina Misoch
sabina.misoch@ost.ch
+41 58 257 18 81

Dementia – prevention and care

Prof. Dr. Heidi Zeller
heidi.zeller@ost.ch
+41 58 257 15 03

Employment at retirement age

Prof. Dr. Jonathan Bennett
jonathan.bennett@bfh.ch
+41 31 848 37 25

Social inclusion

Prof. Dr. Stefano Cavalli
stefano.cavalli@supsi.ch
+41 58 666 64 22

Our partners



Bern University
of Applied Sciences



University of Applied Sciences and Arts
of Southern Switzerland

SUPSI



UNIVERSITÉ
DE GENÈVE

Funding: State Secretariat for Education, Research and Innovation (SERI)

Institute for Ageing Research IAF
OST – Ostschweizer Fachhochschule
Rosenbergstrasse 59
9001 St. Gallen



age-int@ost.ch



+41 58 257 14 85



age-int.ch/en